

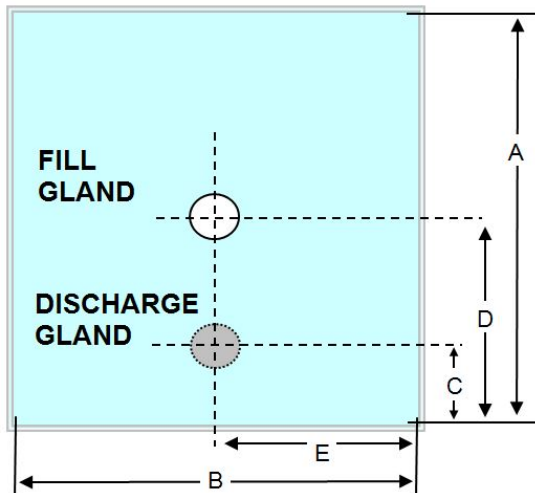


Part Number MET0000448

1000 LTR 3 PLY, 60mu LLDPE (inner and intermediate) 60mu EVOH (outer). 1% Blue Tint
 Fill gland: 2" BSPF (square) c/w cap and 'o' ring.
 Discharge: 2" Butterfly Valve DN50 thread (square) c/w cap, oring and folding handle.

Metano is a **BRC grade A** approved manufacturer, certified to BRC Global Standard for Packaging and Packaging Materials (High Hygiene) Issue 4. The products are produced in a validated ISO8 clean room.

Description



Volume	1000Ltr
Ply	3
Inner	1 x 2200mm LLDPE
Inner Micron	60mu +/- 10%
Outer	1 x 2200mm EVOH
Outer Micron	60mu +/- 10%
Int	1 x 2200mm LLDPE
Int Micron	60mu +/- 10%
Dimension A	2245
Dimension B	2140
Dimension C	450
Dimension D	N/A
Dimension E	Centre Line
Destruction Test	1 in 100
Gland Weld Width	8mm
Liner Weld Width	8mm



Metano Limited. Units 14/15 Winfield Industrial Estate
Rowlands Gill, Tyne & Wear, United Kingdom. NE39 1EH
T: +44 (0) 01207 549 448 F: +44 (0) 01207 549 447
E: sales@metano.com W: www.metano.com

2" Combo Clip.

MET0000089



2" Gland Assembly - FILL

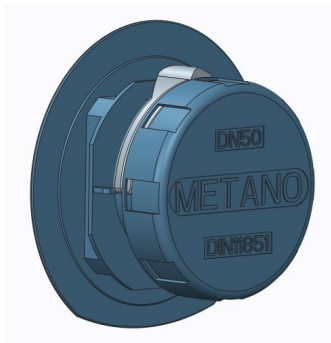
MET0000261

Comprises of

MET0000208 2" BSP Male Plug (Blue) LLDPE

MET0000194 2" Blue Nitrile 'O' Ring 53.64mm x 2.62mm

MET0000241 2" BSP Female Square Gland BLUE LLDPE



DN50 Disposable Butterfly Valve LLDPE Blue

MET0000441