



Part Number MET0001797

1000/DN50 x 3CM

1000 LTR Liquid Pillow Liner

3 PLY 60mu LLDPE film. Available in clear or blue.

Description

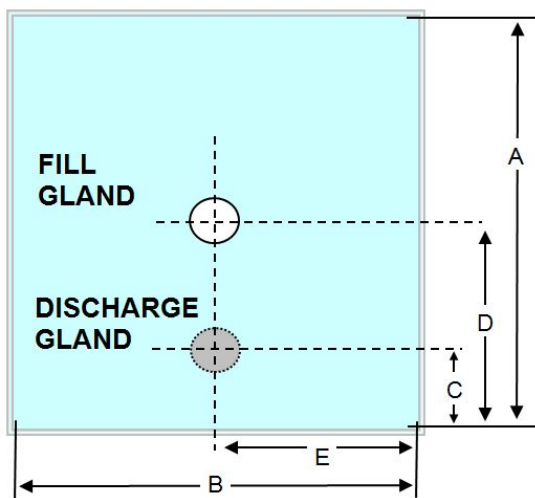
1000 LTR Liquid Liner 3 PLY 60mu LLDPE film. Available in clear or blue

Fill gland: DN50 c/w cap and 'o' ring.

Discharge: 3" BSPF and male S100 Butress Trhread (square) c/w membrane and 3" crown cutter, cap and oring.

Manufactured under the following conditions:-

Metano is a **BRC grade A** approved manufacturer, certified to BRC Global Standard for Packaging and Packaging Materials (High Hygiene) Issue 4. The products are produced in a validated ISO8 clean room.



Volume	1000
Ply	3
Inner	1 x 2200mm LLDPE Film
Inner Micron	60mu +/- 10%
Outer	1 x 2200mm LLDPE Film
Outer Micron	60mu +/- 10%
Int	1 x 2200mm LLDPE Film
Int Micron	60mu +/- 10%
Dimension A	2200
Dimension B	2150
Dimension C	450
Dimension D	Centre
Dimension E	Centre line
Destruction Test	1 in 100
Gland Weld Width	8mm
Liner Weld Width	8mm

Applications

1000/2x3CM Pillow liners are the most cost effective solution for high volume products such as:

Chemical

Adhesives, automotive lubricants, automotive oils, chemicals, coatings, drilling additives, detergents, inks, paints,



Metano Limited. Units 14/15 Winfield Industrial Estate
Rowlands Gill, Tyne & Wear, United Kingdom. NE39 1EH
T: +44 (0) 01207 549 448 F: +44 (0) 01207 549 447
E: sales@metano.com W: www.metano.com

polymer emulsions.

Cosmetic

Shower gell, conditioner, cream, lipstick, liquid makeup, lotion, mascara, shampoo, facial scrubs.

Food & Beverage

Cream, SCM (sweetened condensed milk), fruit juice, edible oils, fish oil, fructose, jams, liquid egg, malts, molasses, pastes, sweeteners, syrups, vinegar, juice, wine, milk.

Pharmaceutical

Manufactured under the following conditions:-

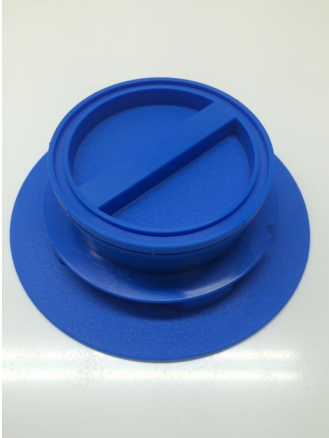
Inside a Validated ISO8 Clean Room

Metano is a **BRC grade A** approved manufacturer, certified to BRC Global Standard for Packaging and Packaging Materials (High Hygiene) Issue 4. The products are produced in a validated ISO8 clean room.



DN50 Gland (Blue) manufactured from LLDPE Food safe and FDA material

MET0000508



3" Discharge Gland Assembly (with cutter and membrane)
Comprises of
MET0000085 3" Gland (Blue) 3" BSP Internal Thread (Female)
MET0000084 3" Crown Cutter (Blue).
MET0000088 3" Blue Nitrile 'O' Ring 82.22mm x 2.62mm
MET0000086 3" BSP Male Plug (Blue)
MET0000267 Membrane Rolls LLDPE Laminate 112mu (BLUE)

MET0000266



DN50 DIN11851 Disposable Cap (Blue)

MET0000485



Blue FDA 'O' Ring 54 id x 5mm

MET0000511