

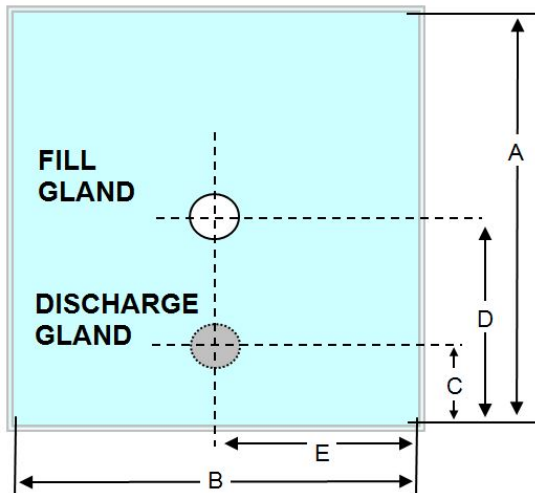


Part Number MET0000447

1000 LTR 3 PLY, 2 x 60mu LLDPE (inner and intermediate) 1 x 60mu EVOH (outer). 1% Blue Tint
 Fill gland: 1" Aseptic Fill with 600mm x 350mm trunk
 Discharge: 2" Butterfly Valve DN50 thread (square) c/w cap, oring and folding handle.

Metano is a **BRC grade A** approved manufacturer, certified to BRC Global Standard for Packaging and Packaging Materials (High Hygiene) Issue 4. The products are produced in a validated ISO8 clean room.

Description



| | |
|------------------|-----------------------------|
| Volume | 1000Ltr |
| Ply | 3 |
| Inner | 1 x 2200mm LLDPE |
| Inner Micron | 60mu +/- 10% |
| Outer | 1 x 2200mm EVOH |
| Outer Micron | 60mu +/- 10% |
| Int | 1 x 2200mm LLDPE |
| Int Micron | 60mu +/- 10% |
| Dimension A | 3535 |
| Dimension B | 2140 |
| Dimension C | 600 |
| Dimension D | 3435 (100MM FROM TRUNK TOP) |
| Dimension E | Centre Line |
| Destruction Test | 1 in 100 |
| Gland Weld Width | 8mm |
| Liner Weld Width | 8mm |

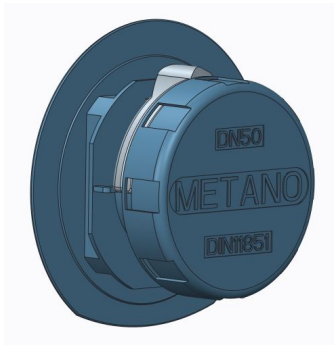


Metano Limited. Units 14/15 Winfield Industrial Estate
Rowlands Gill, Tyne & Wear, United Kingdom. NE39 1EH
T: +44 (0) 01207 549 448 F: +44 (0) 01207 549 447
E: sales@metano.com W: www.metano.com



1 Inch Aseptic fill gland

MET0000413



DN50 Disposable Butterfly Valve LLDPE Blue

MET0000441



2" Combo Clip.

MET0000089