

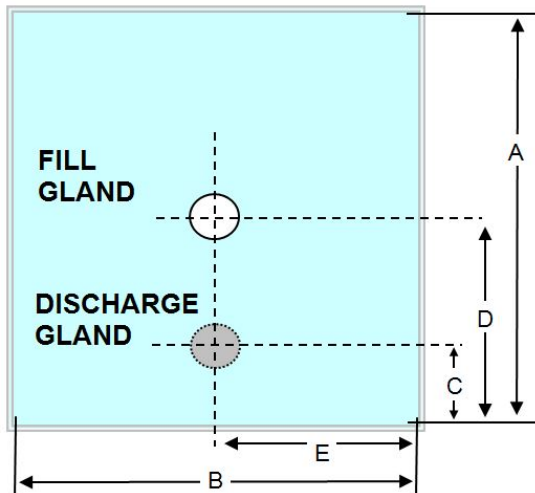


**Part Number MET0000446**

1000 LTR 3 PLY, 60mu LLDPE (inner and intermediate) 60mu EVOH (outer). 1% Blue Tint  
 Fill gland: 1" Aseptic Fill with 1740mm x 380mm trunk  
 Discharge: 2" Butterfly Valve DN50 thread (square) c/w cap, oring and folding handle.

Metano is a **BRC grade A** approved manufacturer, certified to BRC Global Standard for Packaging and Packaging Materials (High Hygiene) Issue 4. The products are produced in a validated ISO8 clean room.

**Description**



Volume	1000Ltr
Ply	3
Inner	1 x 1400mm LLDPE
Inner Micron	60mu +/- 10%
Outer	1 x 1400mm EVOH
Outer Micron	60mu +/- 10%
Int	1 x 1400mm LLDPE
Int Micron	60mu +/- 10%
Dimension A	3942
Dimension B	1203
Dimension C	635
Dimension D	3842 (100MM FROM TRUNK TOP)
Dimension E	Centre Line
Destruction Test	1 in 100
Gland Weld Width	8mm
Liner Weld Width	8mm

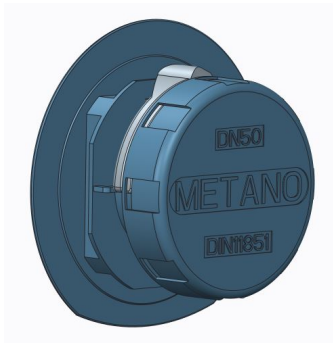


**Metano Limited.** Units 14/15 Winfield Industrial Estate  
Rowlands Gill, Tyne & Wear, United Kingdom. NE39 1EH  
T: +44 (0) 01207 549 448 F: +44 (0) 01207 549 447  
E: sales@metano.com W: www.metano.com



**1 Inch Aseptic fill gland**

**MET0000413**



**DN50 Disposable Butterfly Valve LLDPE Blue**

**MET0000441**



**2" Combo Clip.**

**MET0000089**