



**Part Number MET0000443**

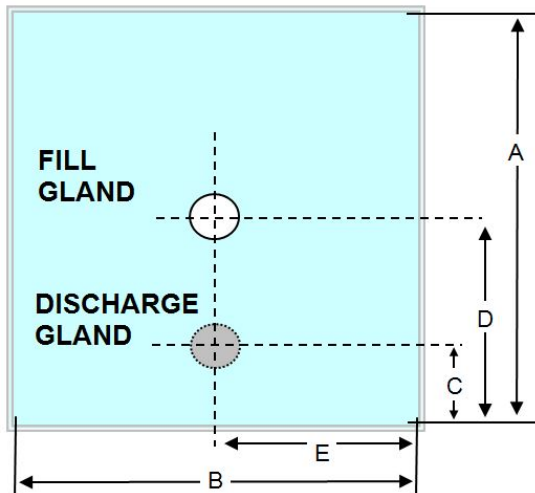
1000 LTR 3 PLY 60mu LLDPE. 2 x 2DN50BV 1% Blue Tint

Fill gland: 2" BSPF (square) c/w cap and 'o' ring.

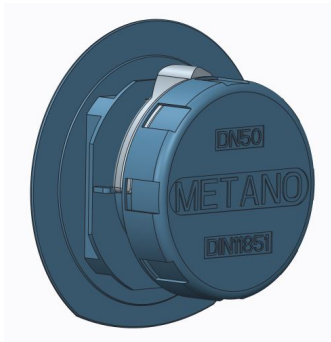
Discharge: 2" Butterfly Valve DN50 thread (square) c/w cap, oring and folding handle.

Metano is a **BRC grade A** approved manufacturer, certified to BRC Global Standard for Packaging and Packaging Materials (High Hygiene) Issue 4. The products are produced in a validated ISO8 clean room.

**Description**



Volume	1000Ltr
Ply	3
Inner	1 x 2200mm LLDPE
Inner Micron	60mu +/- 10%
Outer	1 x 2200mm LLDPE
Outer Micron	60mu +/- 10%
Int	1 x 2200mm LLDPE
Int Micron	60mu +/- 10%
Dimension A	2245
Dimension B	2140
Dimension C	450
Dimension D	Centre
Dimension E	Centre Line
Destruction Test	1 in 100
Gland Weld Width	8mm
Liner Weld Width	8mm



**DN50 Disposable Butterfly Valve LLDPE Blue**

**MET0000441**



**2" Gland Assembly - FILL**

**MET0000261**

Comprises of

**MET0000208 2" BSP Male Plug (Blue) LLDPE**

**MET0000194 2" Blue Nitrile 'O' Ring 53.64mm x 2.62mm**

**MET0000241 2" BSP Female Square Gland BLUE LLDPE**



**2" Combo Clip.**

**MET0000089**