



**Part Number MET0000242**

**250/2x2CM LLDPE**

250 LTR Liquid Pillow Liner  
 3 PLY 60mu Clear LLDPE film.

**Description**

250LTR Liquid Liner 3 PLY 60mu Clear LLDPE film.

Fill gland: 2" BSPF (square) c/w cap and oring.

Discharge: 2" BSPF (square) c/w membrane and 2" crown cutter, cap and oring. Manufactured under the following conditions:-

Metano is a **BRC grade A** approved manufacturer, certified to BRC Global Standard for Packaging and Packaging Materials (High Hygiene) Issue 4. The products are produced in a validated ISO8 clean room.



Volume	250Ltr
Ply	3
Inner	1 x 1400mm LLDPE Clear
Inner Micron	60mu +/- 10%
Outer	1 x 1400mm LLDPE Clear
Outer Micron	60mu +/- 10%
Int	1 x 1400mm LLDPE Clear
Int Micron	60mu +/- 10%
Dimension A	1714
Dimension B	1354
Dimension C	400
Dimension D	Centre
Dimension E	Centre Line
Destruction Test	1 in 100
Gland Weld Width	2 x 6mm
Liner Weld Width	8mm

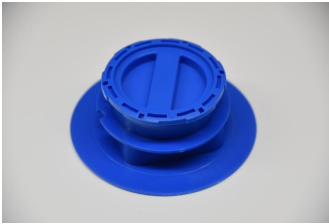


**Metano Limited.** Units 14/15 Winfield Industrial Estate  
Rowlands Gill, Tyne & Wear, United Kingdom. NE39 1EH  
T: +44 (0) 01207 549 448 F: +44 (0) 01207 549 447  
E: sales@metano.com W: www.metano.com



**2" Gland Assembly - FILL**  
Comprises of  
**MET0000208 2" BSP Male Plug (Blue) LLDPE**  
**MET0000194 2" Blue Nitrile 'O' Ring 53.64mm x 2.62mm**  
**MET0000241 2" BSP Female Square Gland BLUE LLDPE**

**MET0000261**



**2" Discharge Gland Assembly (with membrane).**  
Comprises of  
**MET0000208 2" BSP Male Plug (Blue) LLDPE**  
**MET0000194 2" Blue Nitrile 'O' Ring 53.64mm x 2.62mm**  
**MET0000180 2" Crown Cutter (Blue)**  
**MET0000263 2" Membrane blank LLDPE Laminate 112mu (BLUE)**  
**MET0000241 2" BSP Female Square Gland BLUE LLDPE**

**MET0000262**