



**Part Number MET0000273**

**500/2x2CM MET PET**

500 LTR Liquid Pillow Liner  
 2 PLY 60mu Clear LLDPE film.  
 1 PLY 60mu MET PET film.

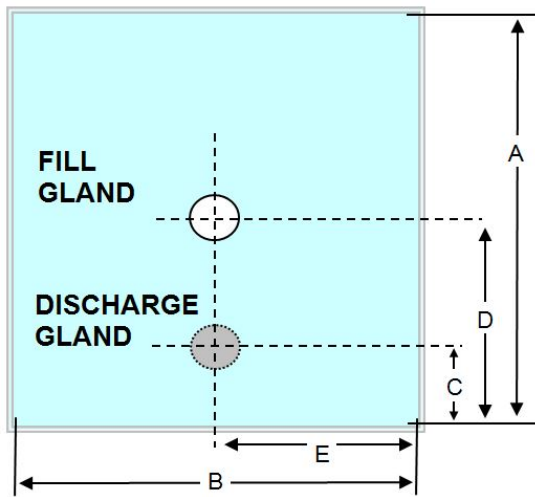
**Description**

500 LTR Liquid Liner 3 PLY 60mu Clear LLDPE film with Intermediate Metalised Polyester Barrier.

Fill gland: 2" BSPF (square) c/w cap and oring

Discharge: 2" BSPF (square) c/w membrane and 2" crown cutter, cap and oring. Manufactured under the following conditions:-

Metano is a **BRC grade A** approved manufacturer, certified to BRC Global Standard for Packaging and Packaging Materials (High Hygiene) Issue 4. The products are produced in a validated ISO8 clean room.



<b>Volume</b>	500
<b>Ply</b>	3
<b>Inner</b>	1 x 1900mm LLDPE Clear
<b>Inner Micron</b>	60mu +/- 10%
<b>Outer</b>	1 x 1900mm LLDPE Clear
<b>Outer Micron</b>	60mu +/- 10%
<b>Int</b>	1 x 1900mm MET-PET 32/12/38
<b>Int Micron</b>	60mu +/- 10%
<b>Dimension A</b>	2164
<b>Dimension B</b>	1854
<b>Dimension C</b>	450
<b>Dimension D</b>	Centre
<b>Dimension E</b>	Centre Line
<b>Destruction Test</b>	1 in 100
<b>Gland Weld Width</b>	2 x 6mm
<b>Liner Weld Width</b>	8mm

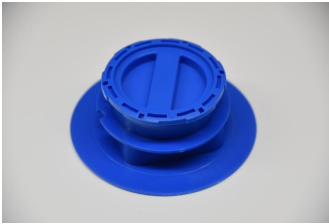


**Metano Limited.** Units 14/15 Winfield Industrial Estate  
Rowlands Gill, Tyne & Wear, United Kingdom. NE39 1EH  
T: +44 (0) 01207 549 448 F: +44 (0) 01207 549 447  
E: sales@metano.com W: www.metano.com



**2" Gland Assembly - FILL**  
Comprises of  
**MET0000208 2" BSP Male Plug (Blue) LLDPE**  
**MET0000194 2" Blue Nitrile 'O' Ring 53.64mm x 2.62mm**  
**MET0000241 2" BSP Female Square Gland BLUE LLDPE**

**MET0000261**



**2" Discharge Gland Assembly (with membrane).**  
Comprises of  
**MET0000208 2" BSP Male Plug (Blue) LLDPE**  
**MET0000194 2" Blue Nitrile 'O' Ring 53.64mm x 2.62mm**  
**MET0000180 2" Crown Cutter (Blue)**  
**MET0000263 2" Membrane blank LLDPE Laminate 112mu (BLUE)**  
**MET0000241 2" BSP Female Square Gland BLUE LLDPE**

**MET0000262**