



Metano Limited. Units 14/15 Winfield Industrial Estate
 Rowlands Gill, Tyne & Wear, United Kingdom. NE39 1EH
 T: +44 (0) 01207 549 448 F: +44 (0) 01207 549 447
 E: sales@metano.com W: www.metano.com

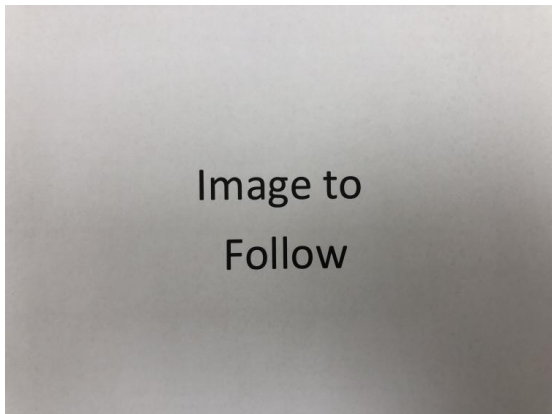
Part Number MET0002761

1000/2xMetano DN50 BV
 1000 Litre Liquid Pillow Liner
 3 PLY 60mu LLDPE film.

Description

1000 Litre Liquid Liner Bag 3 PLY 60mu LLDPE film.
 Fill gland: 2" BSPF (square) c/w cap and O ring.
 Discharge: Metano DN50 BV

Metano is a **BRC grade A** approved manufacturer, certified to BRC Global Standard for Packaging and Packaging Materials (High Hygiene) Issue 4. The products are produced in a validated ISO8 clean room.



Volume	1000
Ply	3
Inner	1 x 2200mm LLDPE
Inner Micron	60mu +/- 10%
Outer	1 x 2200mm LLDPE
Outer Micron	60mu +/- 10%
Int	1 x 2200mm LLDPE
Int Micron	60mu +/- 10%
Dimension A	2200
Dimension B	2150
Dimension C	450
Dimension D	Centre
Dimension E	Centre line
Destruction Test	1 in 100
Gland Weld Width	6mm
Liner Weld Width	8mm

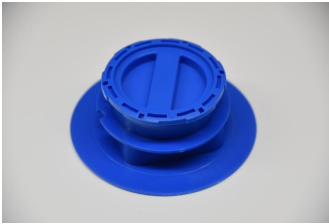


Metano Limited. Units 14/15 Winfield Industrial Estate
Rowlands Gill, Tyne & Wear, United Kingdom. NE39 1EH
T: +44 (0) 01207 549 448 F: +44 (0) 01207 549 447
E: sales@metano.com W: www.metano.com



2" Gland Assembly - FILL
Comprises of
MET0000208 2" BSP Male Plug (Blue) LLDPE
MET0000194 2" Blue Nitrile 'O' Ring 53.64mm x 2.62mm
MET0000241 2" BSP Female Square Gland BLUE LLDPE

MET0000261



2" Discharge Gland Assembly (with membrane).
Comprises of
MET0000208 2" BSP Male Plug (Blue) LLDPE
MET0000194 2" Blue Nitrile 'O' Ring 53.64mm x 2.62mm
MET0000180 2" Crown Cutter (Blue)
MET0000263 2" Membrane blank LLDPE Laminate 112mu (BLUE)
MET0000241 2" BSP Female Square Gland BLUE LLDPE

MET0000262