



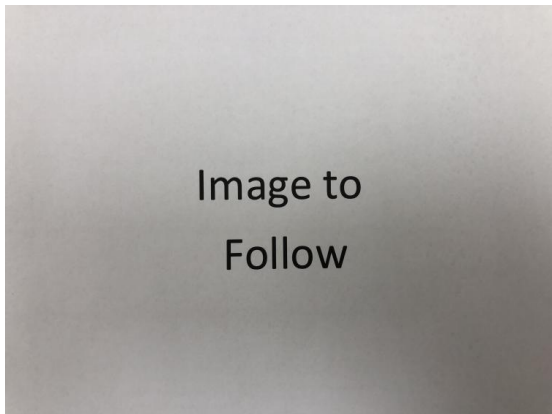
**Metano Limited.** Units 14/15 Winfield Industrial Estate  
 Rowlands Gill, Tyne & Wear, United Kingdom. NE39 1EH  
 T: +44 (0) 01207 549 448 F: +44 (0) 01207 549 447  
 E: sales@metano.com W: www.metano.com

**Part Number MET0001452**

**1000/DN50 x DN50 BV**  
 1000 LTR Liquid Pillow Liner  
 3 PLY 60mu LLDPE film.

**Description**

1000 LTR FAST FILL Liquid Liner 3 PLY 60mu LLDPE film.  
 Fill gland: DN50 with integral seal & cap.  
 Discharge: DN50 integral butterfly valve with cap.  
 Metano is a **BRC grade A** approved manufacturer, certified to BRC Global Standard for Packaging and Packaging Materials (High Hygiene) Issue 4. The products are produced in a validated ISO8 clean room.



|                         |                |
|-------------------------|----------------|
| <b>Volume</b>           | 1000           |
| <b>Ply</b>              | 3              |
| <b>Inner</b>            | 1 x 2200 LLDPE |
| <b>Inner Micron</b>     | 60mu +/- 10%   |
| <b>Outer</b>            | 1 x 2200 LLDPE |
| <b>Outer Micron</b>     | 60mu +/- 10%   |
| <b>Int</b>              | 1 x 2200 LLDPE |
| <b>Int Micron</b>       | 60mu +/- 10%   |
| <b>Dimension A</b>      | 2700           |
| <b>Dimension B</b>      | 2150           |
| <b>Dimension C</b>      | 500            |
| <b>Dimension D</b>      | 120            |
| <b>Dimension E</b>      | Center Line    |
| <b>Destruction Test</b> | 1 in 200       |
| <b>Gland Weld Width</b> | 6              |
| <b>Liner Weld Width</b> | 8              |

**Applications**

1000 Ltr Pillow liners are the most cost effective solution for high volume products such as:

**Chemical**

Adhesives, automotive lubricants, automotive oils, chemicals, coatings, drilling additives, detergents, inks, paints, polymer emulsions.

**Cosmetic**

Shower gell, conditioner, cream, lipstick, liquid makeup, lotion, mascara, shampoo, facial scrubs.



**Metano Limited.** Units 14/15 Winfield Industrial Estate  
Rowlands Gill, Tyne & Wear, United Kingdom. NE39 1EH  
T: +44 (0) 01207 549 448 F: +44 (0) 01207 549 447  
E: sales@metano.com W: www.metano.com

**Food & Beverage**

Cream, SCM (sweetened condensed milk), fruit juice, edible oils, fish oil, fructose, jams, liquid egg, malts, molasses, pastes, sweeteners, syrups, vinegar, juice, wine, milk.

**Pharmaceutical**

**Manufactured in a validated ISO8 Clean Room**

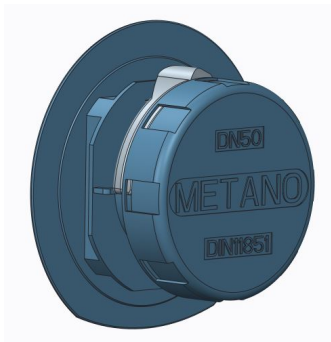


**Metano Limited.** Units 14/15 Winfield Industrial Estate  
Rowlands Gill, Tyne & Wear, United Kingdom. NE39 1EH  
T: +44 (0) 01207 549 448 F: +44 (0) 01207 549 447  
E: sales@metano.com W: www.metano.com



**DN50 Gland Assembly - FILL**  
Comprises of  
**MET0000508 DN50 Gland (Blue)** manufactured from LLDPE Food safe and FDA material  
**MET0000485 DN50 DIN11851 Disposable Cap (Blue)**  
**MET0000511 Blue FDA 'O' Ring 54 id x 5mm**

**MET0000633**



**DN50 Disposable Butterfly Valve LLDPE Blue**

**MET0000441**



**1% BLUE Tint 60mu LLDPE FILM 2200mm**

**MET0000379**