



**Metano Limited.** Units 14/15 Winfield Industrial Estate  
 Rowlands Gill, Tyne & Wear, United Kingdom. NE39 1EH  
 T: +44 (0) 01207 549 448 F: +44 (0) 01207 549 447  
 E: sales@metano.com W: www.metano.com

**Part Number MET0000044**

**GLC Galvanised Steel Folding IBC (1000Ltr).**

Bag in Box Technology.

Rental Only.

For the transport and storage of non Hazardous Liquids. Food Stuffs, Non Hazardous Chemical applications and more.....

**Description**

Galvanised Steel Folding IBC (1000 Ltr). Bag in Box Technology

7 degree sloped base for liquid products, compatible with 2" and 3" liquid Liners. Food Stuffs, Non Hazardous Chemical applications and more.....

Forklift, Pallet truck, Racking suitable.

H1200mm x L1200mm x W1000mm



<b>Model</b>	GLC
<b>Part Number</b>	MET0000044
<b>Capacity</b>	1000
<b>Dimensions External (mm)</b>	H:1200 x L:1200 x W:1000
<b>Dimensions Folded (mm)</b>	H:450 x L:1200 x W:1000
<b>Tare Kg (from - to)</b>	180 - 201
<b>Gross Weight Kg (from - to)</b>	1680 - 1701
<b>Max S.G</b>	1.5
<b>Base Slope</b>	7 deg
<b>UN Packaging Group</b>	N/A
<b>Test Pressure</b>	0
<b>Max Working Pressure</b>	0
<b>Vaccum</b>	0
<b>Construction</b>	Galvanised Mild Steel with plastic level window
<b><u>Transport and storage</u></b>	
<b>Warehouse Store</b>	
<b>Stack Qty Full</b>	4
<b>Stack Qty Empty (Folded)</b>	10
<b><u>40 ft Taut liner</u></b>	
<b>Stack Qty Full</b>	2
<b>Stack Qty Empty (Folded)</b>	5
<b><u>Shipping Container</u></b>	
<b>Stack Qty Full</b>	2



<b>Stack Qty Empty (Folded)</b>	5
---------------------------------	---

**Construction**

Heavy duty Galvanised steel construction, manufactured from heavy gauge steel for the most demanding environments.

**Handling**

Forklift truck and pallet truck. Optional fork-loop arrangements available.

**Transport**

The dimensions of H1200mm x L1200mm x W1000mm and a 7 degree slope make this unit ideally suited to product that flows easily.

**Storage**

Pallet Racking compatible  
Self stacking

**Advantages**

The GLC Galvanised Steel foldable bag-in-box is a low cost rental option for the transport and storage of liquid products such as SCM, fruit juice, dairy products and cosmetics.

The GLC has a capacity of over 1000 litres, is built to last and has unrivalled strength.

Easy to assemble, fill and discharge.

Large outlets aid product discharge.

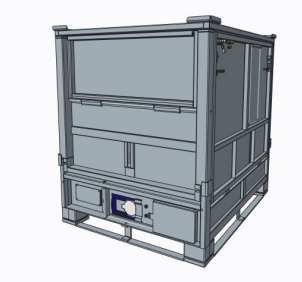
**Metano Liquid Liners**

2" and 3" cutter membrane and 2" and 3" butterfly valve liners. Available in 3 ply LLDPE, can be manufactured with intermediate barrier layers if required.

All Liners are manufactured by Metano to the highest standards in our BRC approved ISO validated clean room.

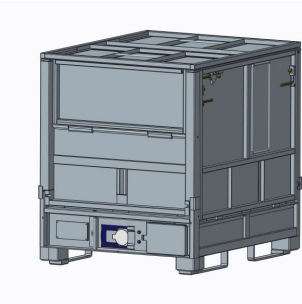
All Metano rental units are reusable and can be recycled at the end of life. Metano can offer a truly sustainable cradle to grave rental solution for all your liquid packaging needs.

Contact Metano Today for a rental Quote.



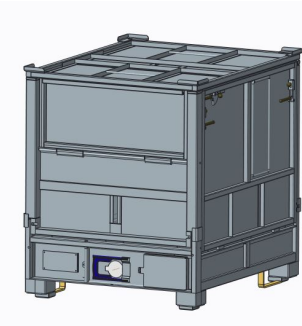
**Full Perimeter Base & 2 inch Valve plate with stacking lugs**  
 Comprises of  
 MET0000541 GLC Lid Complete with Stacking Lugs  
 MET0000532 GLC No1 Left Panel Complete (standard)  
 MET0000590 GLC Pallet Base (Bolted Type) Full Perimeter Base  
 MET0000533 GLC No2 Right Panel Complete (Standard)  
 MET0000534 GLC No3 Bottom Front Gate Panel Complete  
 (standard)  
 MET0000542 GLC No 4 Back Panel Complete (Standard)  
 MET0000535 GLC No3 Top Half Drop Gate Panel Complete  
 (Standard)  
 MET0000436 GLC 2" Stainless Steel Valve Plate c/w C Clip  
 MET0000321

**MET0000561**



**Bolted double long loop without stacking lugs**  
 Comprises of  
 MET0000554 GLC Lid Complete without Stacking Lugs  
 MET0000597 GLC Pallet Base (Bolted Type) 2 x Long (left and  
 right) Bolted Fork Loops on 1200 side  
 MET0000535 GLC No3 Top Half Drop Gate Panel Complete  
 (Standard)  
 MET0000532 GLC No1 Left Panel Complete (standard)  
 MET0000533 GLC No2 Right Panel Complete (Standard)  
 MET0000534 GLC No3 Bottom Front Gate Panel Complete  
 (standard)  
 MET0000542 GLC No 4 Back Panel Complete (Standard)  
 MET0000436 GLC 2" Stainless Steel Valve Plate c/w C Clip  
 MET0000321

**MET0000560**

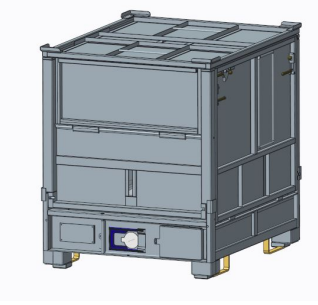


**Single Welded Loop 2" valve plate with stacking lugs.**  
 Comprises of  
 MET0000612 GLC Pallet Base (Welded Type) 1 x Short welded  
 loop (right) on 1200 side  
 MET0000541 GLC Lid Complete with Stacking Lugs  
 MET0000535 GLC No3 Top Half Drop Gate Panel Complete  
 (Standard)  
 MET0000532 GLC No1 Left Panel Complete (standard)  
 MET0000533 GLC No2 Right Panel Complete (Standard)  
 MET0000534 GLC No3 Bottom Front Gate Panel Complete  
 (standard)  
 MET0000542 GLC No 4 Back Panel Complete (Standard)  
 MET0000612 GLC Pallet Base (Welded Type) 1 x Short welded  
 loop (right) on 1200 side

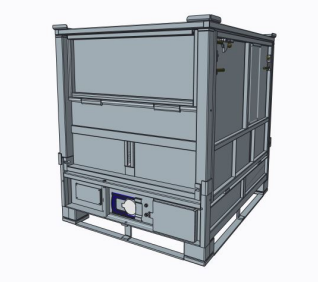
**MET0000614**

**Welded Short Double Loop with stacking lugs 2" Valve Plate**  
 Comprises of  
 MET0000608 GLC Pallet Base (Welded Type) 2 x Short welded  
 loops (left and right) on 1200 side  
 MET0000541 GLC Lid Complete with Stacking Lugs  
 MET0000535 GLC No3 Top Half Drop Gate Panel Complete  
 (Standard)  
 MET0000532 GLC No1 Left Panel Complete (standard)

**MET0000611**

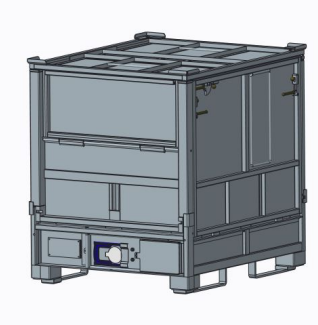


**MET0000533 GLC No2 Right Panel Complete (Standard)**  
**MET0000534 GLC No3 Bottom Front Gate Panel Complete (standard)**  
**MET0000542 GLC No 4 Back Panel Complete (Standard)**



**Full Perimeter Base 3 inch Valve Plate with stacking lugs**  
**Comprises of**  
**MET0000319 GLC 3" Stainless Steel Valve Plate c/w C Clip**  
**MET0000323**  
**MET0000541 GLC Lid Complete with Stacking Lugs**  
**MET0000532 GLC No1 Left Panel Complete (standard)**  
**MET0000590 GLC Pallet Base (Bolted Type) Full Perimeter Base**  
**MET0000533 GLC No2 Right Panel Complete (Standard)**  
**MET0000534 GLC No3 Bottom Front Gate Panel Complete (standard)**  
**MET0000542 GLC No 4 Back Panel Complete (Standard)**  
**MET0000535 GLC No3 Top Half Drop Gate Panel Complete (Standard)**

**MET0000563**

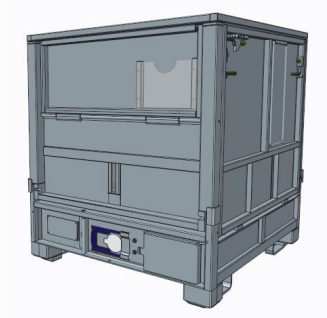


**Bolted Double Long Loop & 2 inch Valve plate with stack lugs**  
**Comprises of**  
**MET0000597 GLC Pallet Base (Bolted Type) 2 x Long (left and right) Bolted Fork Loops on 1200 side**  
**MET0000541 GLC Lid Complete with Stacking Lugs**  
**MET0000535 GLC No3 Top Half Drop Gate Panel Complete (Standard)**  
**MET0000532 GLC No1 Left Panel Complete (standard)**  
**MET0000533 GLC No2 Right Panel Complete (Standard)**  
**MET0000534 GLC No3 Bottom Front Gate Panel Complete (standard)**  
**MET0000542 GLC No 4 Back Panel Complete (Standard)**  
**MET0000436 GLC 2" Stainless Steel Valve Plate c/w C Clip**  
**MET0000321**

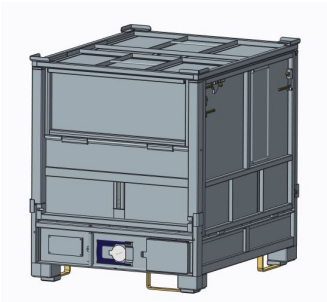
**MET0000562**

**Bolted Double Short Loop, no stack lugs, doc holder-2" Valve plate,**  
**Comprises of**  
**MET0000436 GLC 2" Stainless Steel Valve Plate c/w C Clip**  
**MET0000321**  
**MET0000530 GLC Pallet Base (Bolted Type) 2 x Short (left and right) Bolted Fork Loops on 1200 side**  
**MET0000554 GLC Lid Complete without Stacking Lugs**  
**MET0000532 GLC No1 Left Panel Complete (standard)**  
**MET0000533 GLC No2 Right Panel Complete (Standard)**  
**MET0000534 GLC No3 Bottom Front Gate Panel Complete (standard)**  
**MET0000536 Back Panel No 4 Complete with Document Holder**  
**MET0000537 GLC No 3 Top Half Drop Gate Panel c/w Document**

**MET0000528**

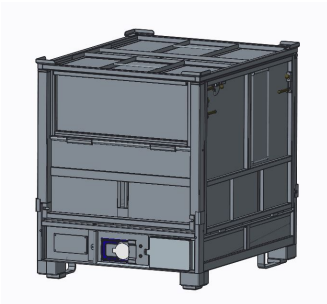


**Holder**



**Single Welded Loop all sides with stacking lugs 2" Valve Plate**  
Comprises of  
MET0000541 GLC Lid Complete with Stacking Lugs  
MET0000535 GLC No3 Top Half Drop Gate Panel Complete  
(Standard)  
MET0000532 GLC No1 Left Panel Complete (standard)  
MET0000533 GLC No2 Right Panel Complete (Standard)  
MET0000534 GLC No3 Bottom Front Gate Panel Complete  
(standard)  
MET0000542 GLC No 4 Back Panel Complete (Standard)  
MET0000613 GLC Pallet Base (Welded Type) 1 x Short welded  
loop (right) on All sides

**MET0000615**



**Single Short Bolted Loop with stacking lugs 2 inch Valve Plate**  
Comprises of  
MET0000541 GLC Lid Complete with Stacking Lugs  
MET0000535 GLC No3 Top Half Drop Gate Panel Complete  
(Standard)  
MET0000532 GLC No1 Left Panel Complete (standard)  
MET0000533 GLC No2 Right Panel Complete (Standard)  
MET0000534 GLC No3 Bottom Front Gate Panel Complete  
(standard)  
MET0000542 GLC No 4 Back Panel Complete (Standard)  
MET0000436 GLC 2" Stainless Steel Valve Plate c/w C Clip  
MET0000321  
MET0000731 GLC Pallet Base (Bolted Type) 1 x Short (right)  
Bolted Fork Loop on 1200 side

**MET0000705**